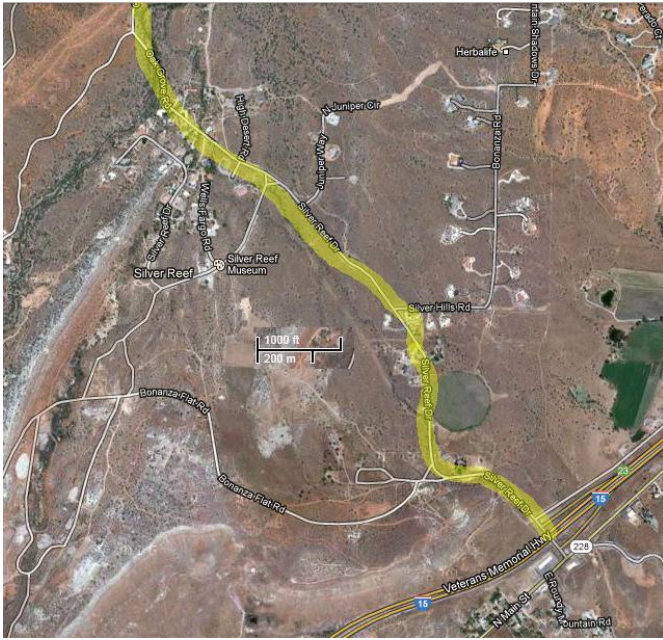


## Cottonwood Canyon to Bitter Creek Canyon



### Directions to the Trail

Take exit 23 from the Interstate I15 and turn right onto Silver Reef Road.  
Follow the paved Silver Reef Road for 1 mile where it changes to the Oak Grove Road.  
Follow the paved Oak Grove Road 0.4 miles to the end of the pavement.  
Cross the bridge and enter the Dixie National Conservation Area.  
Follow gravel forest road 031 up the hill bearing right at an intersection.  
Follow road 031 for 1.8 miles to the Oak Grove Campground Road which turns to the right.  
Keep straight ahead on forest road 032.  
Follow road 032 in a westerly direction for another 9.3 miles.  
At this point the road runs parallel to Cottonwood Creek for several hundred feet.  
Park along the road near the Cottonwood Creek sign (12.5 miles from I15).