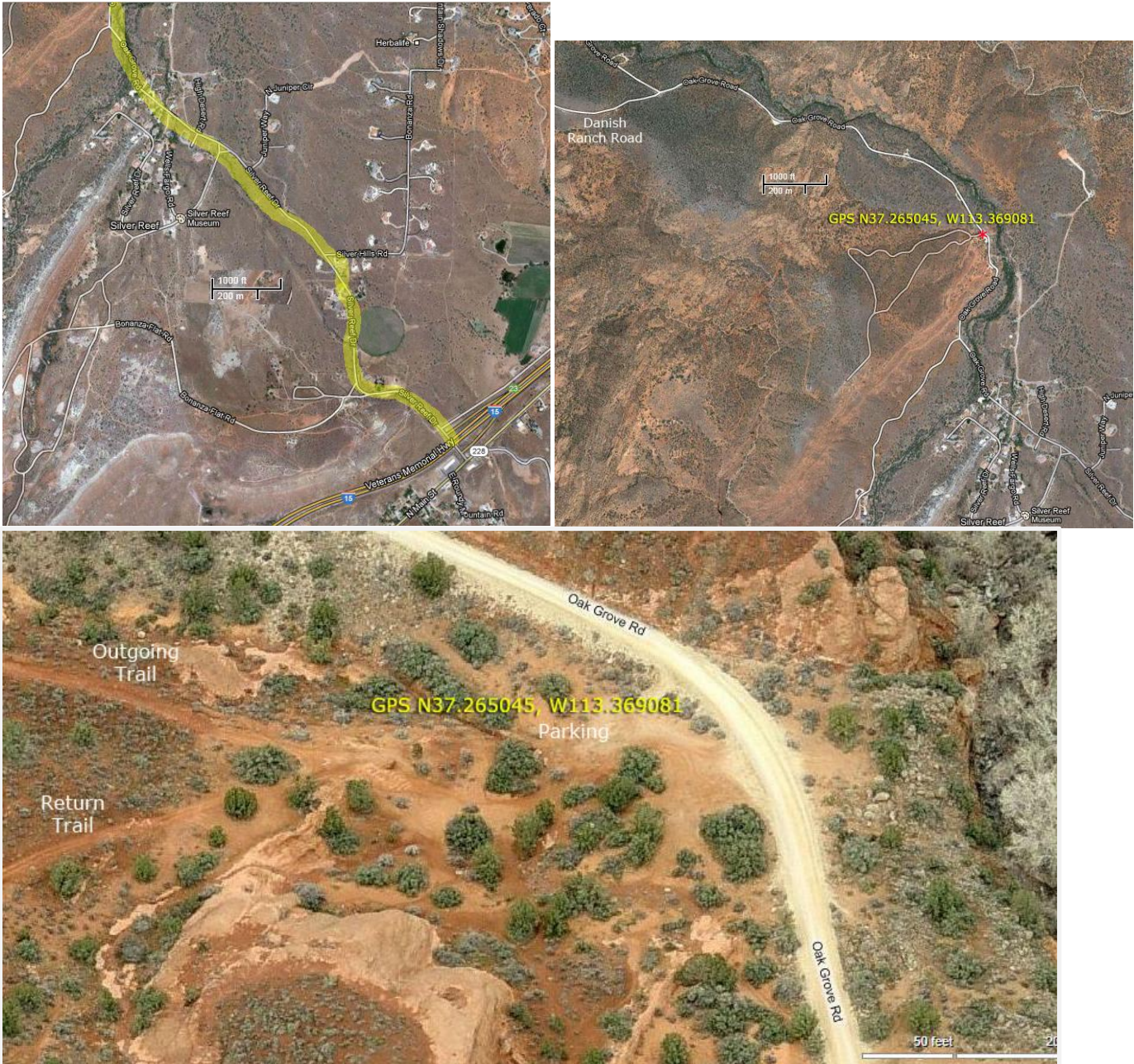


## Directions to the Leeds Trail



**Directions (GPS N 37-15-54.504/37.265045, W 113-22-8.112/113.36908)**

- Take exit 23 from the Interstate I15 and turn right onto Silver Reef Road.
- Follow the paved Silver Reef Road for 1 mile where it changes to the Oak Grove Road.
- Follow the paved Oak Grove Road ½ mile where the pavement ends at a bridge and the Dixie National Forest begins.
- From here follow the gravel forest road 032 up the hill bearing right at an intersection a short ways along.
- Continue on road 032 to a primitive campground as you turn the corner exactly 2.0 miles from the Interstate.