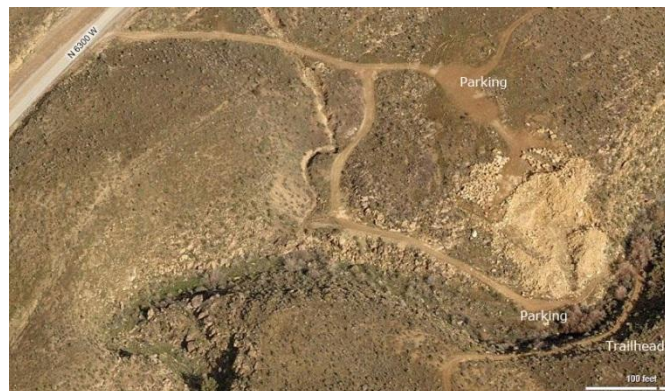
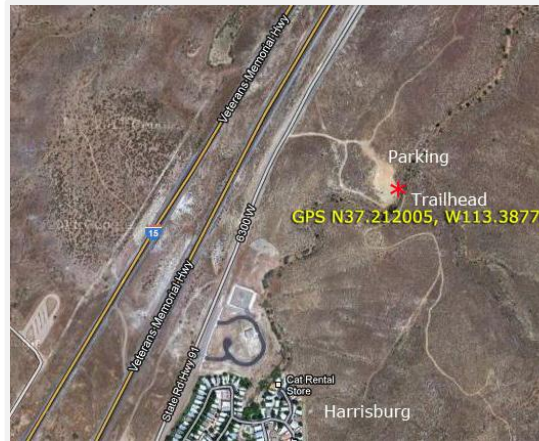
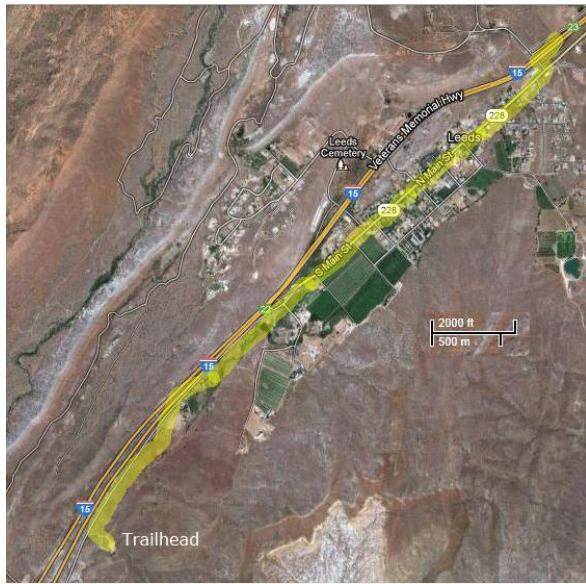


Directions to the Quail Creek Reservoir - North Overlook



Directions to the trail

- If travelling north-east on Interstate I15, take exit 16 towards Hurricane.
 - Turn left at 5300W towards Quail Creek State Park and Reservoir (second traffic light).
 - This road ends at the service road near Harrisburg.
 - Turn right and go past Harrisburg to a small gravel road ½ mile past Harrisburg.

 - If travelling south-west on Interstate I15, take exit 23 into Leeds.
 - Turn left on Silver Reef Road and go under I15.
 - Turn South on N Main Street.
 - Continue through Leeds to a stop sign at the I15 exit.
 - Veer left taking the service road about 2 miles to the unmarked gravel road.
- (If you miss this road turn around in Harrisburg and come back ½ mile)