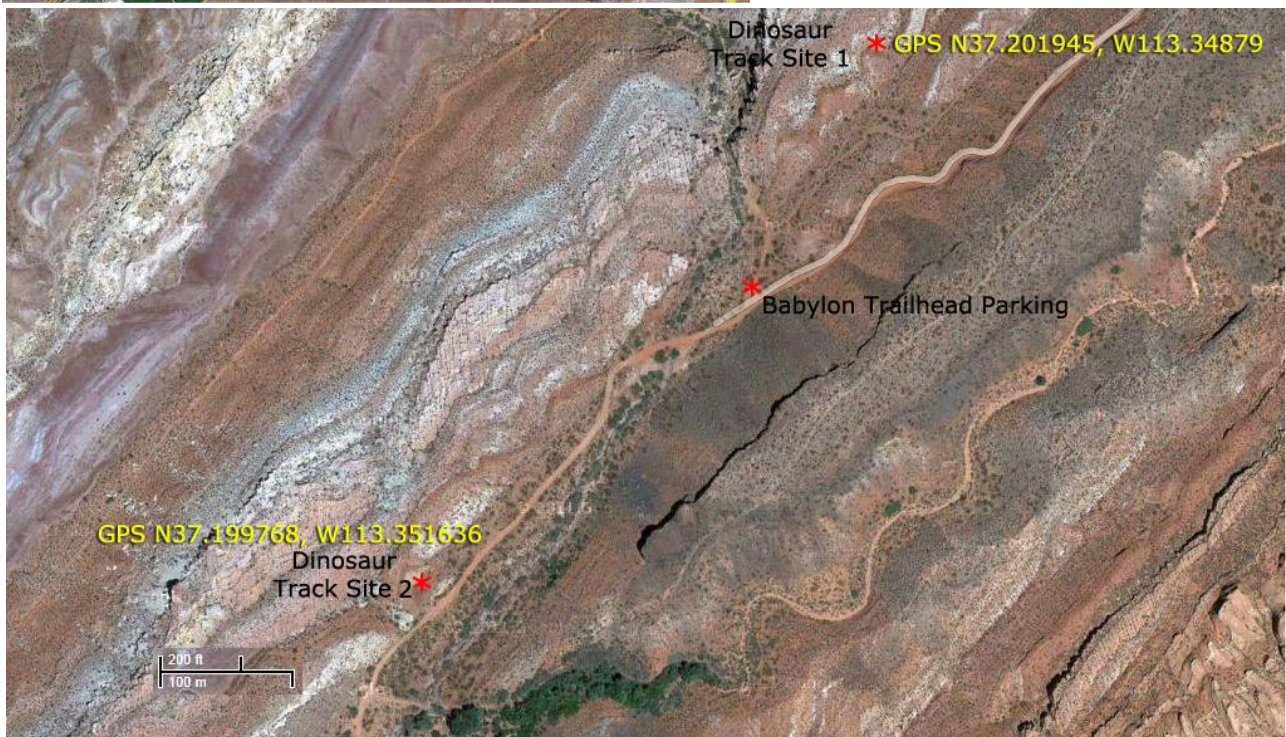
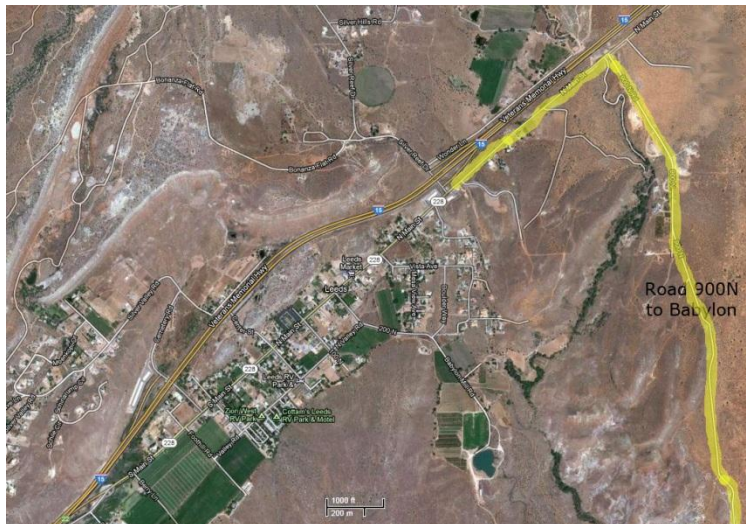


Directions to Dinosaur Tracks - Babylon



Directions

- If travelling north-east on Interstate I15, take exit 22 onto S Main Street in Leeds, Utah and proceed north-east through Leeds.
- If travelling south-west on Interstate I15 take exit 23, turn left on Silver Reef Drive going under I15 to N Main Street and turn left heading north-east.
- Travel north-east out of Leeds to gravel road 900 N which is marked with a brown sign.
- This road veers south into Babylon and ultimately ends at the historic Stormont Silver Mill on the Virgin River, a distance of 4.3 miles.
- For the first set of tracks park at the Historic Babylon Trailhead located at the foot of the long steep hill down the cliffs [GPS N 37.201945, W113.34879].
- The second set is a further 0.22 miles down the road and is accessed from a small road/parking place on the right [GPS N37.199768, W113.351636].