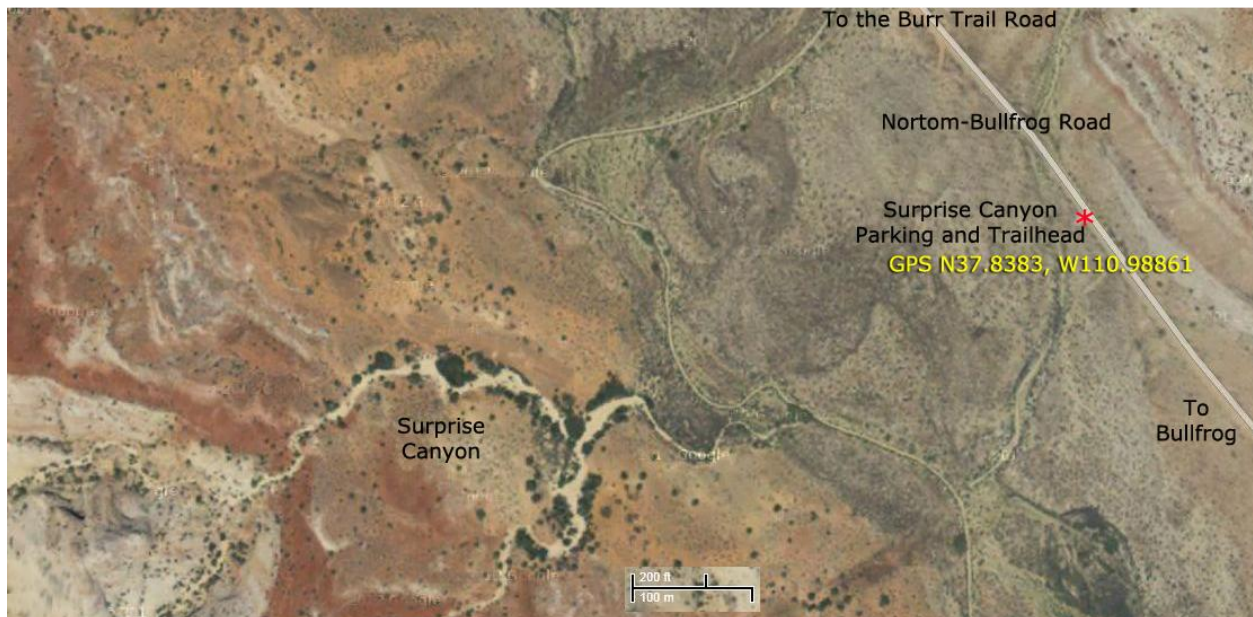


## Directions to Surprise Canyon – Capitol Reef NP



### Directions

- From the Capitol Reef Visitor Center take SR24 east for 9.1 miles to the Notom-Bullfrog turn-off.
- Turn south and follow the Notom-Bullfrog Road for 33.2 miles to the signed Burr Trail Junction.
- At the Burr Trail Junction continue straight ahead for a further 1.8 miles to the trailhead.
- Park in a small parking lot on the west side of the road.
- To return via the Burr Trail Scenic Road, return to the Burr Road junction and turn left.
- Travel up the gravel switchbacks and on to Boulder – 36 miles.
- Turn right on SR12 and drive 37 miles to Torrey.
- Turn right on SR24 and drive 10.7 miles to the Visitor Center.