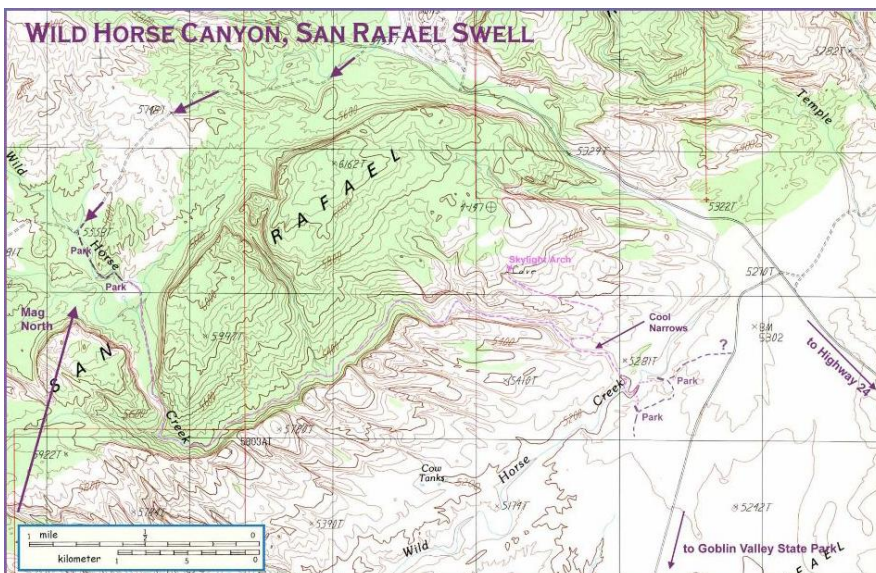
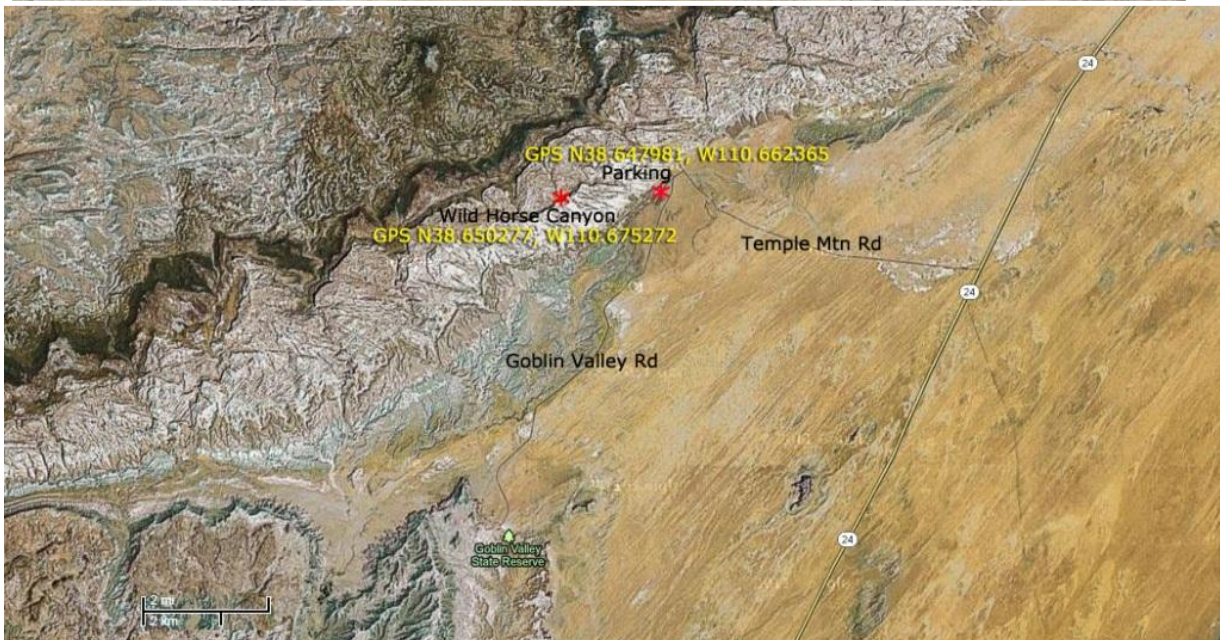
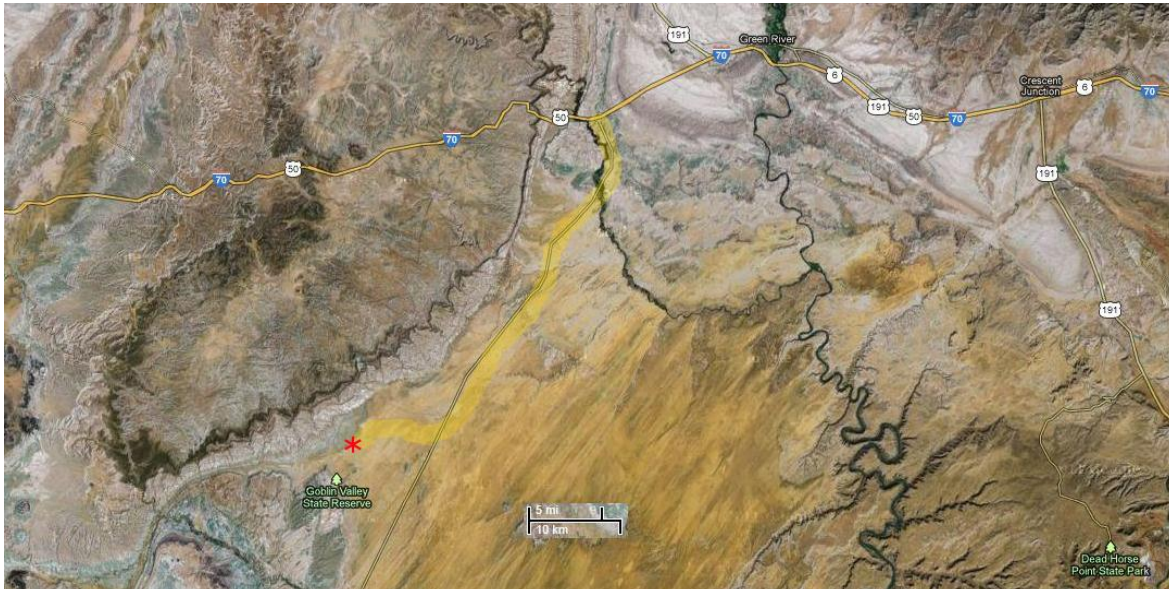


Directions to the Wild Horse Canyon



Directions

- Drive 24 miles south from I70 exit 149 to the temple Mtn Rd, or 20 miles north from Hanksville.
- Turn west onto the Temple Mountain Road and drive 5.2 miles to the Goblin Valley Road.
- Take the Goblin Valley Road south about 1/2 mile.
- Take any of several small dirt roads off to the west.
- There is a network of roads here that lead to several parking spots overlooking the wash of Wild Horse Creek.
- Wild Horse Canyon is the obvious canyon cutting through the reef just to the left of a prominent cave half way up the reef.