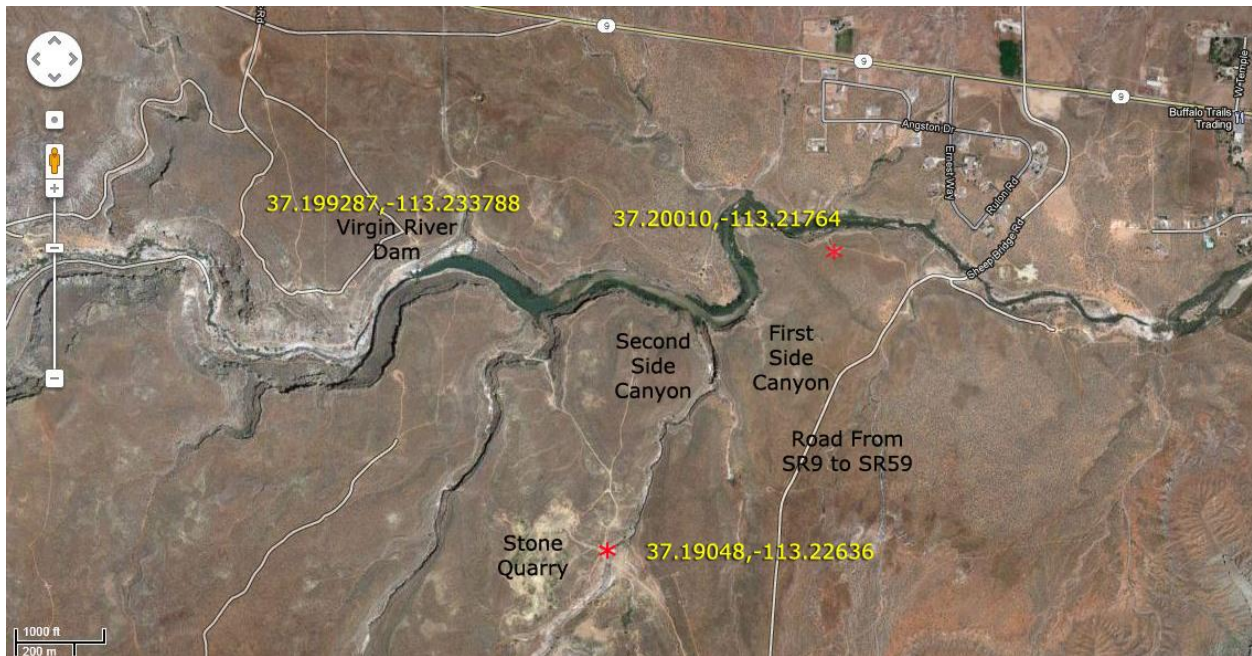


Directions to Jem Trail



Directions

- Drive 4.9 miles west on SR9 from the corner of SR9 and SR17 to the Sheep Bridge Road.
- Turn right on Sheep Bridge Rd, cross bridge and turn right just after a cattle gate 0.7 miles from SR9.
- Drive 0.2 miles to the parking lot.
- The trail is 1.3 miles to the head of a major side canyon draining into the Virgin River.
- The Virgin River Dam is a further 0.9 miles.