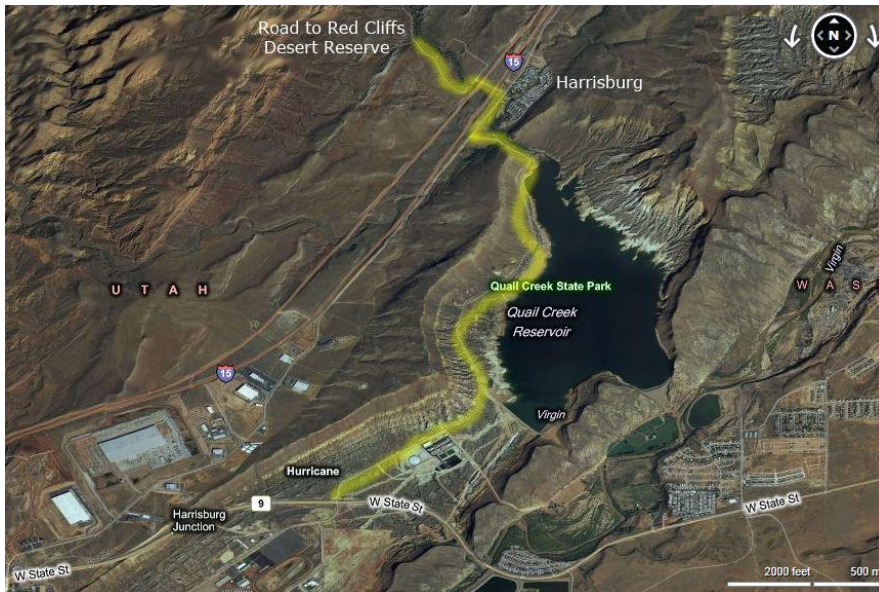


Directions to Dicks Canyon – Red Reef



Directions

- If travelling NE on I15, take exit 16 towards Hurricane.
- Turn left at 5300W towards Quail Creek State Park.
- This road ends at the service road near Harrisburg.
- Turn right and then turn left on the Red Cliffs Reserve Road.
- If travelling SW on I15 take exit 23 into Leeds and turn left onto N Main Street.
- Continue through Leeds to a stop sign at the I15 exit.
- Veer left taking the service road to Red Cliffs Desert Road.
- Drive to the Red Cliffs Campground, cross the creek, and park at campsite 8.
- The East Red Reef trail leaves from here.
- Follow this trail along the base of the red cliffs for about 1 mile to Dicks Canyon.
- An alternate route to the Canyon is by heading SW from Leeds by ATV.
- Cross the White Reef and head south through a series of small roads and trails to the base of the red Reef just north of Dicks Canyon.
- From there the canyon is reached by climbing over a small hill where a small wash leads down into the wash from Dicks Canyon.

