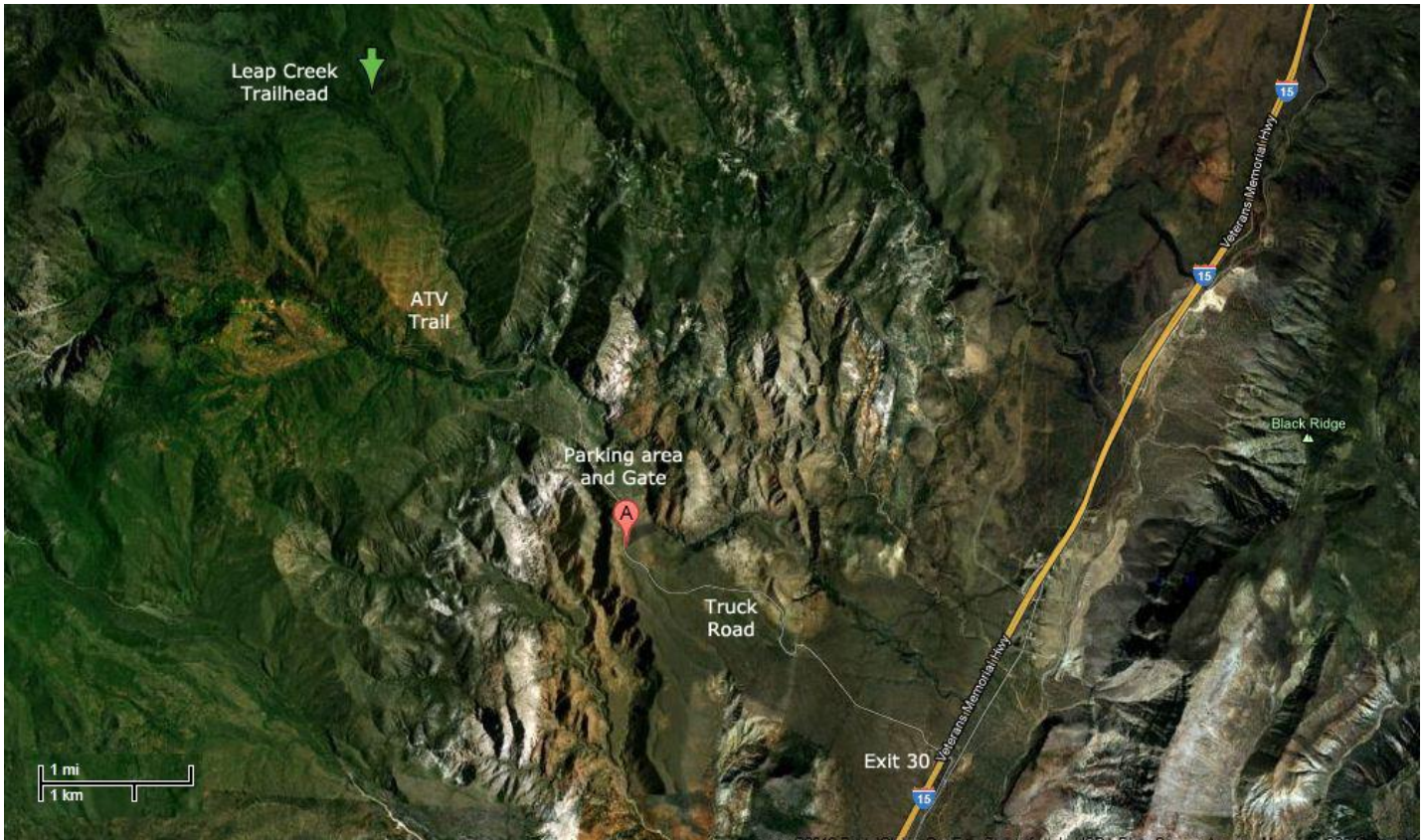


Directions to Leap Creek, Browse



Getting There

- Take exit 30 from Interstate I15 and drive North West on the graded gravel Forest Road 037 4 miles to a large parking area.
- From here take an off road vehicle the remaining 3.5 miles to the browse station.
- This last section of road is very rough and can easily take 1 hour to traverse.
- The last 3.5 miles of the road beyond the parking area is gated from first snow until about mid-May.
- The trail starts behind the Browse Ranger station, crosses Mill Creek, and then winds its way gradually uphill for 2 miles before heading up the steeper section.