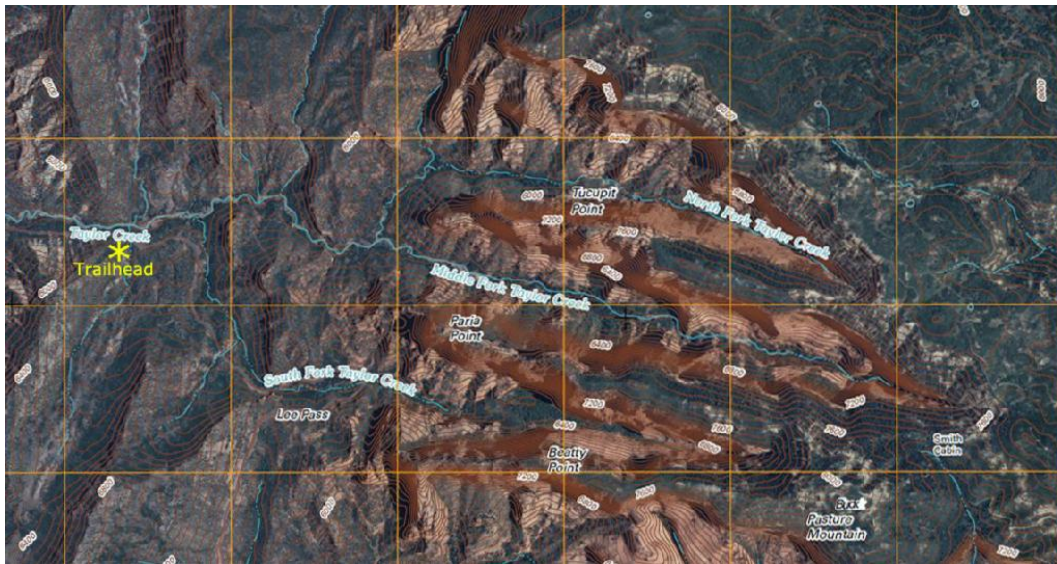
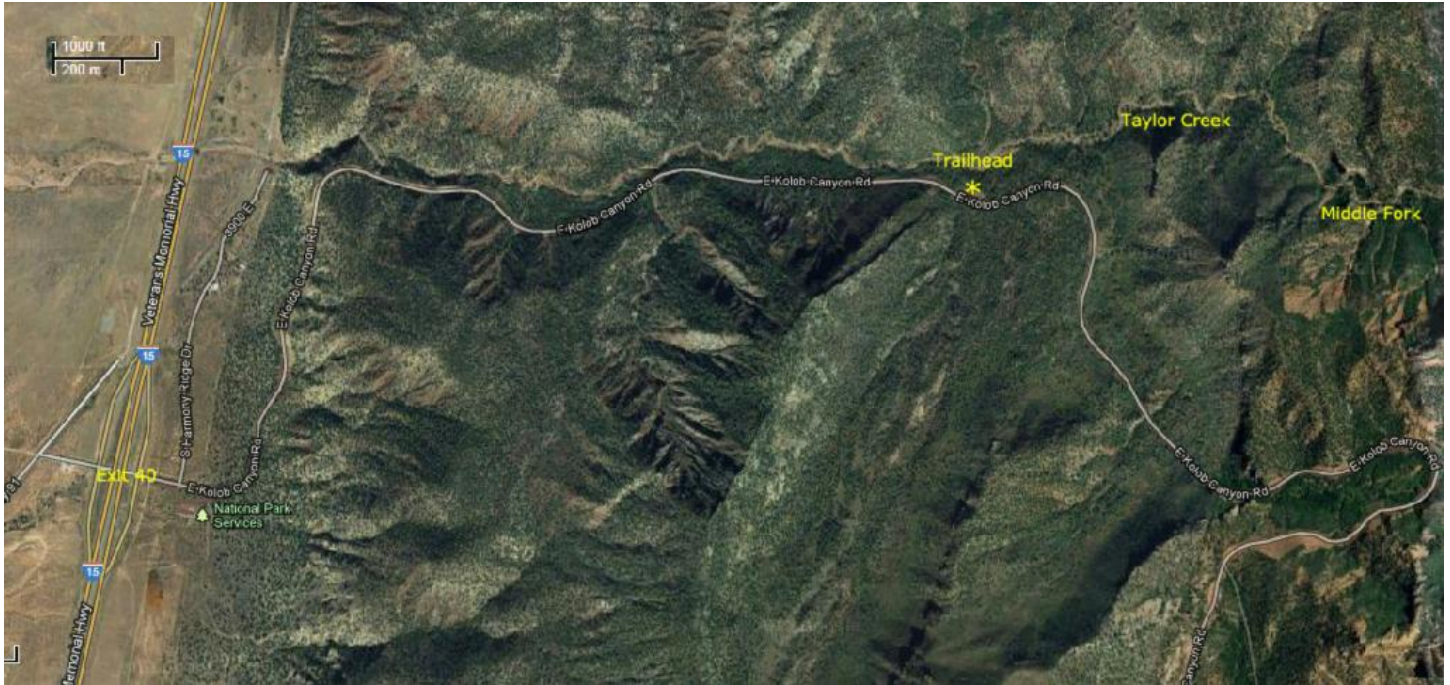


Directions to Middle Fork of Taylor Creek



Getting There

Kolob Canyons of Zion National Park is located off exit 40 on Interstate 15 between St George and Cedar City, Utah.

The Trail

- The first section along Taylor Creek, from the trailhead to the Larson cabin, has the combined flow of both the Middle Fork and North Fork of Taylor Creek and the trail crosses the stream 17 times.
- The next section of the trail, from the Larson cabin to the Fife cabin, has 21 stream crossings but when we went there was minimal water flow so the stream could generally be crossed with one step.
- The final section from the Fife Cabin to the Double Arch has 16 easy stream crossings.
- The Double Arch is quite spectacular with the slope leading up to the base covered with wild flowers.
- The best time to visit the arch would be in the spring when the wild flowers are in bloom but the stream crossings could be more difficult.