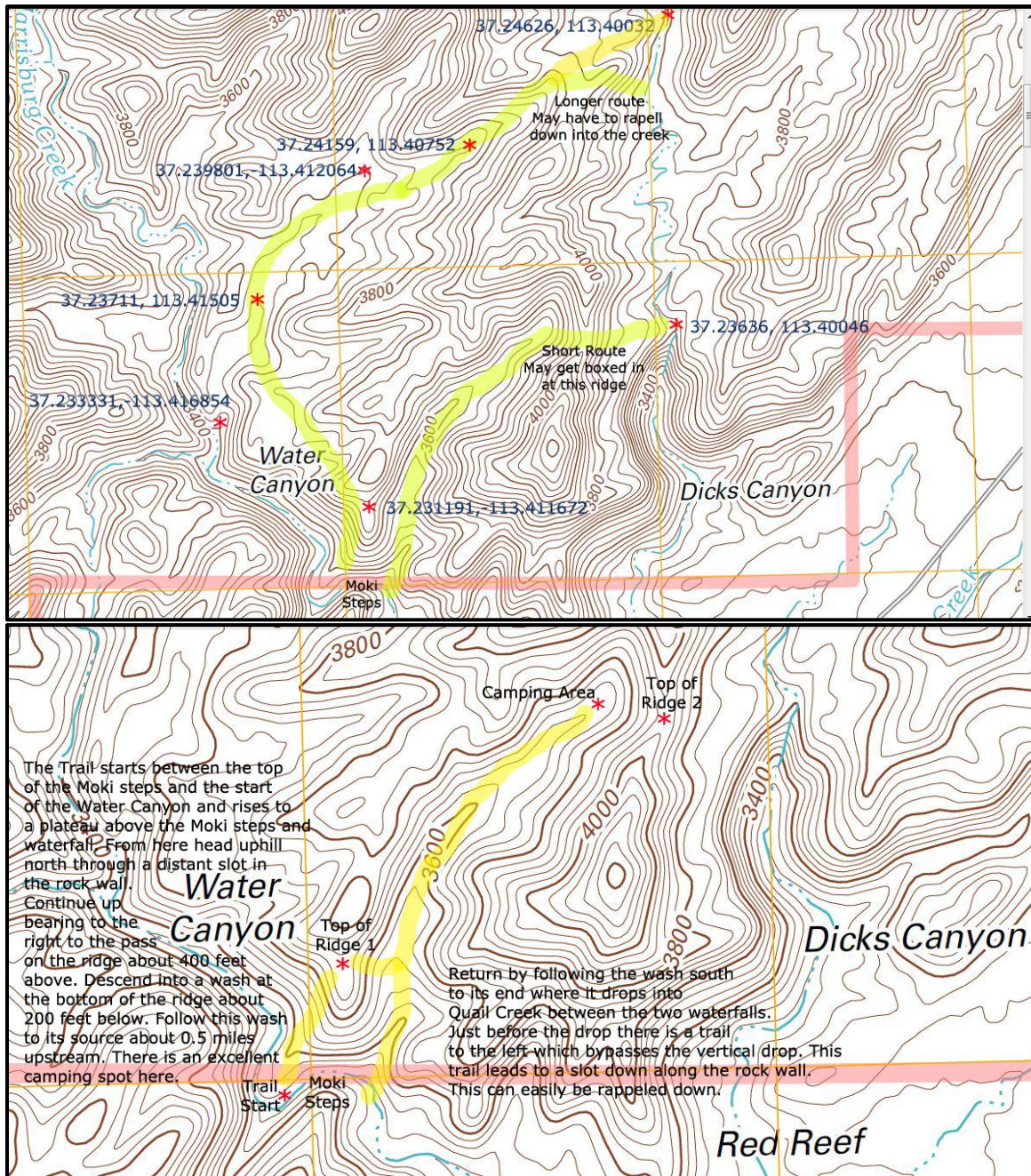


## Directions to Dicks Canyon from the Moki Steps



### Directions

- Take the Red Reef Trail from the Red Cliffs CG and climb the Moki steps around the 2<sup>nd</sup> waterfall.
- A short distance along this canyon, before the Water Canyon, take the steep trail up the right side.
- From there head north up through the slot in the hill to the ridge above keeping to the right.
- From the ridge descend into an unnamed wash which drops into Quail Creek to the right.
- Turn left and follow this wash about 0.55 miles north to its head.
- At the head of this wash climb the ridge to the north which overlooks Dicks Canyon and wash.
- Descend into Dicks Canyon to a point just above the high drop.
- Explore Dicks Canyon and wash, a length of 1 mile one way, climbing several dryfalls.
- Return over the ridge, down the wash and drop into Quail Creek keeping to the left as you go down.