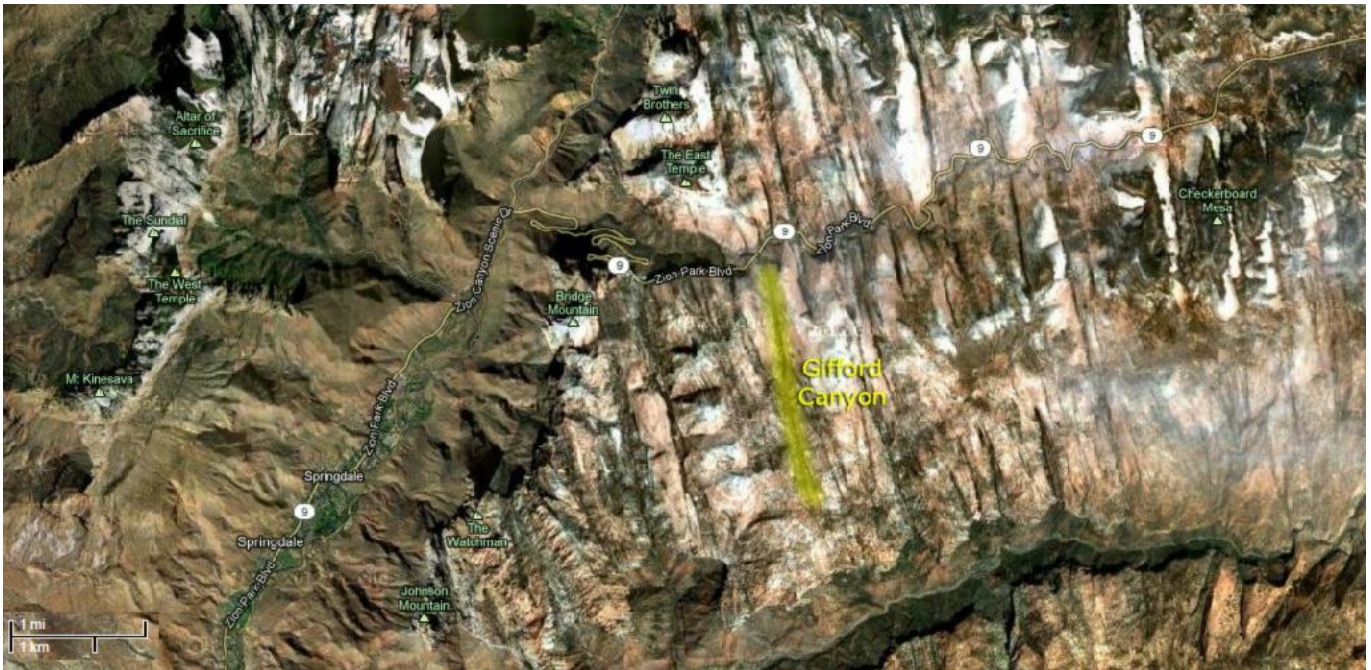
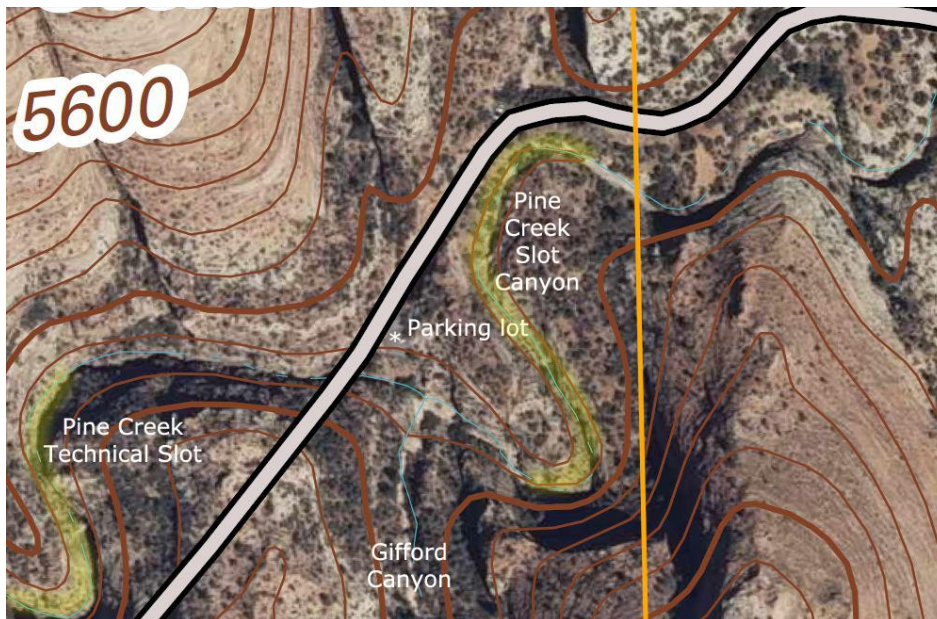


Directions to Gifford Canyon



Getting There

- If coming from the west take SR9 through Springdale, Utah, into Zion National Park.
- Turn right on SR9 at the Canyon Junction and take the switchbacks up and through the Main Zion Tunnel.
- Park at the main parking lot at the east exit from the tunnel.
- If coming from the east turn onto SR9 at the Mount Carmel Junction and drive into Zion National Park.
- From the entrance gate drive 5.6 miles to the entrance to the Main Zion Tunnel and park here.
- From the parking lot climb down the steep sandy path beside the restroom and enter the Pine Creek wash which is about 50 feet below the parking lot. Gifford Canyon is directly across Pine Creek from the parking lot.



The Trail

- Gifford Canyon drops into Pine Creek over a 50 foot waterfall.
- To get to the canyon, scramble up the 15 foot wall of slickrock and then follow the trail upwards into the Gifford Canyon above the waterfall.
- If you are uncomfortable climbing the slickrock, which is quite steep, look for the beaten path to the left of the rock and make your way up this path.